

Rio Verde

September 2011



Roundup

The Rio Verde Horsemen's Association serves the unincorporated county lands north and south of Rio Verde Drive. The Association's purpose is to protect all horse properties and privileges and to preserve the equine and rural lifestyle. Membership is open to all, horse owners and non-horse owners alike, who support this purpose. Voting is only open to property owners in this area.

RVHA Fall Dinner Dance

Mark your calendars for the Annual RVHA Fall Dinner Dance to be held on Saturday, November 5, 2011 at Cave Creek Outfitters. Come enjoy a fun evening of good food, good music, and good friends. There will be a silent auction and 50/50 raffle. This will be an "RSVP Only" event for RVHA members and their guests. No admittance night of. More details to come.

Hope to see you there!!

*Let's
dance*

RVHA BOARD OF DIRECTORS

President, Margaret Scott
(480) 473-3777 • margaret@rvha.us

1st Vice President, Mo Wachman
(480) 471-3131 • mo@rvha.us

2nd Vice President, Mary Kay Della Vella
(480) 206-2937 • marykay@rvha.us

Secretary, Jenny Powers
(480) 861-8392 • jenny@rvha.us

Treasurer, Judy Riley
(480) 471-0056 • judy@rvha.us

DIRECTORS

Marjorie Porter.....(480) 471-3051
marjorie@rvha.us

Cortland Parks.....(480) 948-0025
cortland01@aol.com

Ray Wallage(480) 943-9209
ray@rvha.us

Lori Bridwell.....(480) 471-3151
info@cowboycollege.com

RVHA COMMITTEES

Membership – Chairman
Mo Wachman • (480) 471-3131

Trails Committee (Community Trails) - Co-Chairmen
Thesesa Thraen • (480) 528-9148

Social Committee – Chairman
Mary Kay Della Vella • (480) 206-2937

Off-Trail Rides – Chairman
Rocco Wachman • (480) 250-4625

Roadside Cleanup – Chairmen
John and Cyndi Shy • (480) 471-7667
azshys@desertinet.com

Rio Verde Roundup Newsletter
Margaret Scott, Editor • (480) 473-3777

Advertising - Nanci Arvizu • (480) 686-1970

Copy Editor - Article Submission
Amy Cohorst • (480) 471-2822

Mailing Committee
KJ Schaffer • (480) 488-6106

“And the Winners Are...”
by Jenny Powers • (480) 861-8392

RVHA Classified Ads
Terry Stecyk • terry@rvha.us

Historian
Nena Henry • (480) 471-7678

Rio Verde Horsemen's Association

28150 N. Alma School Pkwy., #103/112, Scottsdale, AZ 85262

www.rvha-az.com

PRESIDENT'S COMMENTS

The weather is hot and humid with very little monsoon rain so let's remember fire safety. So far this summer we've had one fire started by someone's careless welding. But thanks to some fast thinking water delivery guys and neighbors, what could have grown into a major fire was stopped. Special thanks to Don Scoby from Dynamite Water and Ken Aamold from Rio Verde Water.

This spring an outbreak of the EHV-1 virus spread throughout the equine community. More than 400 horses in 19 states were exposed to the virus, and another 1,685 have been exposed by association. During this outbreak several horses were euthanized or died due to the virus. The U.S. Department of Agriculture's Animal and Plant Health Inspection Service released its final report saying the outbreak is finally over.

During the summer the RVHA social events pretty much come to a standstill, but make sure to check the website calendar for upcoming fall and winter events. If any member has an upcoming event they would like us to post on the website, please let us know.

Have you been down to the Verde River lately? I know some members were a little upset during their last visit to the river. Yes, it's been fenced. Yes, they put in bathrooms, picnic tables, grills and even dumpsters, but still no horse step overs. RVHA Director Cortland Parks and Trails Committee Chair Theresa Thraen are staying on top of this to make sure the Tonto Forest follows through with putting these gates in. We will keep everyone informed and updated on this issue.

I'd like to wish past RVHA president Everett Raines and his beautiful wife Brenda a very Happy 50th Wedding Anniversary this September!!!

Thank you to all of our advertisers. Please remember to patronize them.

Margaret Scott
RVHA President





We're on a roll! Membership in the Rio Verde Horsemen's Association is nearing an all time high. Since I last wrote this article for the June issue we have gained an additional 40 members. At the time our membership totals 457 members. A good number are members who have renewed their membership, but 104 are brand new members for the year 2011. Most of our membership falls into the "Voting" category, while 65 are "Associates", meaning they live outside the Rio Verde Foothills area and cannot vote.

Since this is our September issue, our fall and winter activities will begin soon. A lot of you checked the box on your application that you'd be interested in joining various committees. We are always looking for assistance. If you'd like to offer **your time, let** us know. We'll be more than happy to put you to work!!!

Joanne Black & Mike Sorum	Cynthia & Josie Richards and
Kim Drangland	Adrian Sykes
Linda & Jose Gramajo	Diana Savage
Donna Perkin-Hart & James Hart	Rhonda & Brooke Waldersen
Dianne & Jeremiah Johnson	Maria Wrede & Brian Foley
Jason & Rhea Ane Kenne	Geri Wright & John Coxe
Marge Klasek	And Welcome Back to:
Pamela Meade & Howard Dusek	Craig Marple

With the help of our very capable website designer, Frank Turben, we're now set up to handle online applications and payments can be made using PayPal. We should also have a renewal form set up on the website so that everyone can renew their membership online also using PayPal. Thanks to Frank for all your help.



Don't forget to contact me if you'd like a license plate(s) for your car or truck. They're FREE to members and they really look sharp going down the road!

If any of your personal information changes, make sure to contact us so we can update our database. Don't forget your email address; people make this change quite often. For any questions we can help you with, please contact either me or Judy.

Mo Wachman * 480 471-3131 mo@rvha.us
Judy Riley * 480 471-0056 judy@rvha.us

THE ARIZONA HORSE COUNCIL

-by Jean Anderson



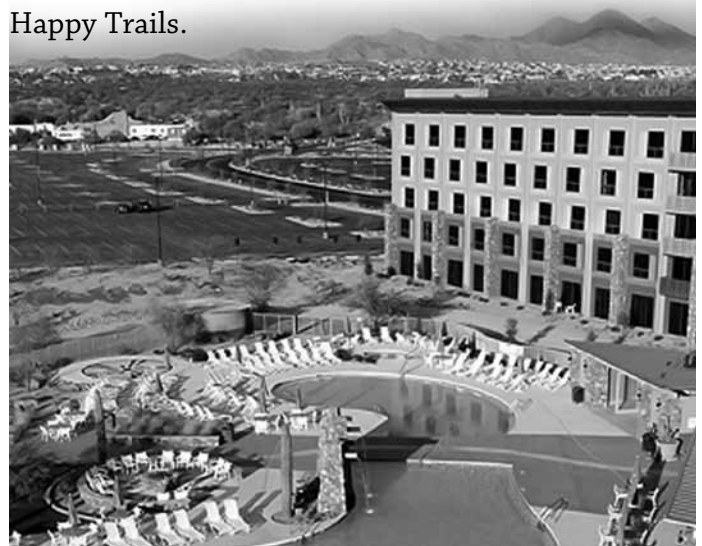
The Arizona Horse Council's (AzHC) lobbyist, Robert Shuler, along with Bas Aja from the Cattlemen's Association and Philip Bashaw from the Farm Bureau, are still hashing out the language, along with the Arizona Department of Revenue, for the HB 1183 that was signed by the governor months ago. This bill is about the equine property assessment. Will keep you apprised as this goes forward.

Also, AzHC is having a Arizona State Centennial Celebration up at Mormon Lake, along with the Arizona Trail Association, on Saturday, September 24, 2011. Look up all the information on our web site at www.arizonahorsecouncil.org for more information. Should be cool up there the end of September!!

AzHC is also having a Trail Horse Challenge Fundraiser on October 15, 2011, during the Queen Creek Horse Expo. Contact our AzHC Board Member, Linda Slay. Info is on our web site: www.arizonahorsecouncil.org. Limited to 60 people.

And....I am proud to announce that the 2013 National Trails Symposium will be held here in Arizona at the Fort McDowell Radisson Resort. We will be needing all sorts of volunteer help. The actual date has NOT yet been determined, but the month will be April of 2013. What a wonderful opportunity for ARIZONA to shine. We have such great recreational opportunities here in Arizona, and hope to draw between 600 and 1000 people to this symposium.

Happy Trails.



DOGTOR T --- THE PET VET

-by Melissa Thompson, DVM

The small terrier lay on the cold stainless steel table, lethargic, definitely not normal for a 4 year old terrier. He only moves his eyes as I continue to question his owner. "So how long has he been vomiting?" I ask. "A few days" replies his owner. She is concerned that her beloved friend has not been himself and hasn't held down any food or water over the last 48 hours. "Is it possible he got in to any chemicals, pesticides, weed killer, medicines? Did he have any human food?" The questioning goes on and on and the reply is the same, "no, no, no". After running blood work, it is determined that the little terrier is in kidney failure. Now we are back to questioning the owner to figure out why. "Ok, so can you tell me everything that you have given to Buster a few days before he got sick?" "We give him his regular dog food; he got a rawhide after his trip to the dog park last weekend. He was sore from running around so much, and I gave him an Aleve, he was moving around much better after that..."

This happens more often than you would think, people giving their pets medications from their own medicine cabinet. In fact 25% of the calls to the Animal Poison Control were about human medications that pets ingested. In this case a 4 year old otherwise healthy dog, died. He was in complete kidney failure and could not be saved. While many people may treat their pets like people, they are not. Medications like ibuprofen, acetaminophen, and naproxen can all be fatal to our pets, and it doesn't take very much. One naproxen tablet can cause kidney damage to a 22 pound dog. So what are some common toxins around the house to watch for?

Human medications- Don't give your pet any medications, even over-the-counter medicines, without first consulting with your veterinarian. The money you spend on an office visit and a pet approved medication will be small in comparison to emergency vet bills or even a worse outcome.
Human foods- most people know the dangers of

chocolate, but also refrain from giving your pets grapes, raisins, onions, garlic, macadamia nuts, avocado, and products that contain alcohol, xylitol (artificial sweetener found in sugar-free gum and other products) or caffeine. These foods can cause gastrointestinal disturbances, kidney failure, liver failure, anemia and even death.



25% of the calls to the Animal Poison Control were about human medications that pets ingested.

While many people may treat their pets like people, they are not.

Insecticides/herbicides/rodenticides- If you use a pest control company, check with them about the safety of their products. Make sure to pick up any pet bowls or toys before these products are applied to the area. Same holds true for weed control; check the container carefully before applying to your yard and call the company with any questions you may have. What should you do if your pet gets into something it shouldn't? If your pet is stable, contact the ASPCA Animal Poison Control (888) 426-4435. Have the box/bottle of the product your pet consumed readily available. They may

instruct you how to take care of the issue yourself or direct you to seek medical assistance from your veterinarian. If your pet is not stable i.e. having a seizure, unconscious, difficulty breathing, seek medical treatment right away. Again, have the container/bottle from what your pet got into as to not delay treatment for your pet.

In no way is this list a complete list of toxins to keep away from your pet. There are many more household hazards including plants as well. For a more complete list please visit the ASPCA website at www.asPCA.org

Dr. Thompson is a Rio Verde Foothills resident and RVHA member. She practices at Banfield, The Pet Hospital, at 7077 E. Mayo Boulevard.



136TH STREET AND RIO VERDE DRIVE INTERSECTION

(AN EMAIL FROM CITY OF SCOTTSDALE)



Good Morning All,

I wanted to provide an update to the status of our application to MCDOT for “Special Project Fund” monies for the intersection improvements at 136th Street and Rio Verde Drive. At the annual coordination meeting on August 17th, Scottsdale staff discussed the status of the application and the improvement project. The County informed us that they were still compiling and reviewing all the applications submitted (many cities submitted applications) and will approve or deny applications at their next Transportation Advisory Board (TAB) meeting. The tentative TAB meeting will be on September 20th at 9:00 a.m. at 2901 W. Durango. I spoke with Clem Ligocki this morning and he said the agenda still hasn’t been approved but it will be a public meeting open to public comment from residents. Also, he would like each city to do brief presentation (3 min. or less) and then open up it for questions from the TAB board members. As I understand, there were several applications submitted from various cities and there is limited funding.

If you would like to gain more information, please contact Clem Ligocki at (602) 506-8672 or go to the website link at <http://www.mcdot.maricopa.gov/tab/tab.htm> . Once the agenda has been approved, Clem said he will notify the applicants with the details of the meeting and post it on the website. If there is the option of making a brief presentation, someone from the City of Scottsdale will present (either myself, supervisor or manager). You are more than welcome to attend the meeting and provide your comments.

Thank you,

Kathryn Kleinschmidt, P.E.
Traffic Engineer
City of Scottsdale
Transportation Department
Ph: (480) 312-7613
Fx: (480) 312-4000
Email: kkleinschmidt@scottsdaleaz.gov

SOME RIDING RULES FOR OLD HORSE WOMEN:

1. We DO NOT need to show up with our hair combed, make up on and wearing a clean shirt.

2. Moaning, groaning and complaining about aching muscles is perfectly acceptable, as is taking Motrin (or something stronger) prior to a ride.

3. Helping someone on or off the horse does not mean the rider is an invalid. It only means the horse got taller overnight.

4. No one will comment about how big someone's butt looks in a saddle.

5. Everyone will wait, patiently, while someone dismounts and adjusts equipment. Everyone will also wait, patiently, until that person remounts and is ready to move on...no matter how long that takes.

6. When a horse is acting up we will accept that the horse is just having a bad hair day and it is not the rider's fault.

7. Mentioning it is too hot, too dry, too humid, too wet, too buggy, etc., is considered self expression, not whining.

8. Wanting to be first, last, walk, or just stop does not mean the rider is a wimp. Sometimes it is necessary to teach a horse who is in charge.

9. We will take the time to discuss the important issues of the day like who is dating who, who is cheating on who and any other relevant information which needs to be passed on.

10. We will acknowledge that horses are very strange animals and sometimes for no reason at all we fall off of them. If this happens to any rider the other riders will ascertain that the person is okay and then not mention the incident to another living soul, especially husbands and significant others.

11. We will acknowledge, without apology, that riding more than 6 hours increases our grumpy level far more than any ego benefits we may get from riding longer.

12. Our horses are not fat they are "big boned".

13. I need to keep this riding mysterious and strange sounding. If everyone else finds out how much fun it is the price of the horses will go up and I won't be able to afford a dozen of them.

(Author unknown)

FOUR PEAKS ANIMAL RESCUE CORNER



Three words sum up the summer at Four Peaks Animal Rescue....

KITTENS, KITTENS, KITTENS!

This summer we were hit hard with pleas of help from numerous people with litters of kittens. Unfortunately we

had to turn away many of them due to lack of space. We have a litter found in a storm drain, and a litter of orphaned kittens that needed to be bottle-fed. We have helped Maricopa County Animal Care and Control and have taken in kittens that were too small to be in the shelter (if the kittens are not a certain weight when admitted into the shelter, they will be killed), and the list goes on and on. The kittens have been spayed and neutered, they have been tested for feline leukemia and FIV and are up-to-date on their vaccine, and now are looking for their new homes.

This summer also marked some great adoptions. We placed six dogs, four goats, two kittens and two turtles since the last Roundup was printed.



For more information about Four Peaks Animal Rescue, our available pets, events, etc, please visit our website at www.fourpeaksanimalrescue.org

*Funding for FPAR is derived from fundraisers, public & private donations, & adoption fees. Donations & Auction items are tax deductible. IRS 501(c) (3) ID No. 36-4262371

Four Peaks Animal Rescue
28150 N Alma School Pkwy
103/470
Scottsdale, AZ 85262
480-471-3520
Fax: 480-471-2201

ROADSIDE CLEANUP

Well, our first season of roadside cleanup is under our belts. For those new members here's the scoop:

The RVHA has joined the Adopt-A-Road program with the City of Scottsdale where we clean both sides of Dynamite from 136th Street east to 144th Street. We have also joined the Maricopa County program called Adopt-A-Highway where we clean both sides of Rio Verde Drive from 144th Street east to 152nd Street.

The upcoming dates for the next season are for 2011: October 1st, December 3rd, and for 2012, February 4th and April 7th. This is an all volunteer project, and we'll be sending out email reminders later with more information. Watch for them.

A big "thank you" to John and Cyndi Shy who oversee this program for us.



RURAL METRO UPDATE

-by Fire Chief John Kraetz

I thought I would pass on some information that I think your members will be pleased to hear. Monday, August 1st under a cooperative agreement between the Rio Verde Fire District and Rural Metro Fire Department, an ambulance was placed into service that will dramatically reduce the response time out on the corridor. This unit will be stationed at the Rio Verde Fire Station. It will be staffed 24 hours a day by a Paramedic and an EMT. Up until now, any ambulance service to the corridor came out of either Fountain Hills or Carefree, so you can see that the ambulance part of emergency services for your folks will be much closer. If you have any questions about this new service, drop me a note to John.Kraetz@rmetro.com, or give me a call at 602-616-6363.



SRP UPDATE

This e-mail was received from Debbie Vaske – SRP Public Involvement Representative on 8.15.11:



Good morning,

As you may recall, I contacted you in March in regard to SRP being approached by a wireless carrier that is interested in providing wireless service to your area of Rio Verde. This additional carrier, AT&T, would provide you with a choice of your wireless carrier.

As I explained in March, by bringing an additional choice of wireless communication to your area, it was necessary to install one additional pole inside the Pinkerton Substation that is located at 164th and Rio Verde Drive.

At that time, some of you had asked that I research the possibility of having the new pole look similar to a cactus. Today, I wanted to circle back with you on the result of my research with AT&T and SRP's Telecom Department as well as keep you informed of the direction SRP is heading.

In order to provide your community with an additional provider of wireless service, it has been determined that it is technically necessary for the height of the new pole to be no less than 70' (compared to the current height of the existing poles in the substation which are over 80'). I think you will agree that a 70' high cactus would not appear realistic within our desert landscape. Therefore, the pole (although shorter than the existing poles), will be the same type of pole that you see there today. To minimize visual impact, SRP will paint the pole to match the existing poles.

This 70' single pole will provide an additional wireless provider of choice for dependable, excellent service for you in the Rio Verde area. It will also be available for co-location of future wireless voice and data service providers. As I stated in March, the pole will be installed in the back section (south part) of the Pinkerton substation property.

I am committed to working with wireless carriers and SRP's Telecom to provide the residents of Rio Verde a choice of their wireless carrier as well as minimizing the visual impact in your beautiful community.

Thank you for your feedback and comments and allowing me the time to do some research and get back to you. SRP anticipates the new pole will be installed in early 2012. I will send out an update when it gets closer to installation.

Thank you again,
Debbie Vaske
Public Involvement Representative
debbie.vaske@srpnet.com
(602) 236-2883



FROM MARICOPA COUNTY WEBSITE

CODE OF THE WEST

It is important for you to know that life in the country is different from life in the city. County governments are not able to provide the same level of service that city governments provide. To that end, we are providing you with the following information to help you make an educated and informed decision to purchase rural land.

ROADS AND ACCESS

The fact that you can drive to your property does not necessarily guarantee that you, your guests and emergency service vehicles can achieve that same level of access at all times. Consider the following.

EMERGENCY RESPONSE

Response times by law enforcement, fire suppression and medical emergency services may vary due, in part, to the County's geography, road conditions in bad weather, and the inadequacies of rural addressing. Emergency response to outlying areas can also be extremely slow and expensive. If the property you purchase is not in an existing Fire District, which is often the case in rural areas, you could be billed a

substantial amount for the cost of a response to a fire or medical emergency.

LEGAL ACCESS

The existence of an unobstructed road to your property does not guarantee the road will remain open in the future or that you will have unlimited access. The road may cross another property. With the assistance of a title company or private attorney, verify existing easements and ensure that all necessary ingress/egress easements are in place.

ROAD MAINTENANCE

Maricopa County maintains about 2,000 miles of off reservation roads: 500 (+/-) miles are paved. Many rural properties are accessed by public easements ("N" Roads), which are not maintained by the Maricopa County Department of Transportation – no grading or snow plowing. Some public easements are not maintained on a regular basis or maintained by anyone! It is very important to know if your property is accessed by a public easement or a county maintained road, what type of maintenance to expect, and who will maintain it.



PRIVATE ROAD STANDARDS

Emergency service and large construction vehicles may encounter problems navigating small narrow roads. To address this issue, Maricopa County adopted an ordinance requiring access roads to be built to a certain standard. For more information, contact Maricopa County Department of Transportation at our web site www.maricopa.gov or 602-506-8600.

EXTREME WEATHER DRIVING

In extreme weather conditions, roads (including County maintained roads) can become impassable. You may need a four wheel-drive vehicle and/or chains for all four tires to travel safely during storms, which can last for several days.

NATURAL DISASTERS

Natural disasters, especially floods, can destroy roads. A dry creek bed can become a raging torrent and wash out roads, bridges and culverts. Property owners served by private roads and subdivision roads are responsible for the repair and reconstruction of damaged roads and structures, which can be very expensive.

Even though you pay property taxes to the County, the amount of tax collected does not cover the cost of services provided to rural residents.

PAVING

If an existing road is unpaved; it is highly unlikely that Maricopa County will pave it in the foreseeable future. If the seller of any property indicated that the road will be paved-be careful! Contact Maricopa County Department of Transportation to verify the status of the road and any future plans for the road.

VEHICLE “WEAR AND TEAR”

Because unpaved roads are typically rough and slippery in wet weather, vehicle maintenance costs may increase when you regularly travel on these roads.

CONSTRUCTION COSTS/DELAYS

It may be more expensive and time consuming to build a rural residence due to delivery fees and the time required for inspectors to reach your site.

MAIL, NEWSPAPER AND PARCEL DELIVERY

Regular mail, newspaper and/or parcel delivery may not be available in all areas of the County. Check with the postmaster, local newspaper office and parcel

delivery services in your area. Delivery fees may also be higher than within a city.

SCHOOL BUSES

School buses travel only on roads that have been designated as school bus routes by the school district. It may be necessary to drive your children to the nearest publicly maintained road to catch the school bus. Check with the school district to determine the appropriate school bus route for your area.

ARIZONA’S OPEN RANGE LAW

Arizona has an open range law. This means that if you do not want cattle, sheep or other livestock on your property, it is your responsibility to fence them out. It is not the responsibility of the rancher to keep his/her livestock off your property. Also, if your dog harasses livestock, the rancher may legally shoot the dog without prior notice to you.

IN CONCLUSION

Even though you pay property taxes to the County, the amount of tax collected does not cover the cost of services provided to rural residents.

Since the rural west will not change immediately to accommodate your lifestyle or expectations, you should be prepared to adapt accordingly. You are encouraged to be vigilant in exploring and thoroughly examining any issues related to a rural existence that could affect your decision to relocate to this area. The information presented in the Code of the West is not intended to discourage you, only to give you a true and accurate picture of rural living in Maricopa County, Arizona. For the complete “Code of the West”, go to: http://www.maricopa.gov/pr_detail.aspx?releaseID=1551 or you can also find it on the RVHA website at rvha-az.com, then click on Area Awareness.



TRAILS

-by Jenny Powers

Brown's Ranch Trailhead Plans Unveiled

At a public meeting June 7, the City of Scottsdale presented plans to move forward with the Brown's Ranch Trailhead located approximately 1.25 miles north of the intersection of Alma School Road and Dynamite Boulevard. The trailhead will be part of the McDowell Sonoran Preserve and is designed for multi-use serving equestrians, mountain bike riders, rock climbers, bird watchers, trail runners, and hikers. Dogs on leashes are permitted.

The trailhead will contain parking and support amenities for public access to an extensive network of trails in the area of Brown's Ranch and south of Granite Mountain to Fraesfield Mountain along the alignment of Dixileta Drive. The area consists of 4,000 acres with an additional acquisition of 4,400 acres planned for the fall of 2011. Phase One will have parking for 200 passenger vehicles and 32 horse trailer rigs. The trailer parking will be a pull-through design and will be separated from the passenger vehicle parking by a planted median. The surface will be decomposed granite. Hitching rails and water troughs will be available. The support amenities include restrooms, a covered ramada, signage, a small educational

amphitheater, low-level lighting and drinking water for people and dogs. The road will have an automatic gate that limits access to daylight hours.

Construction will begin in early 2012 with Phase One completed by early 2013. The design process began in February 2011 and the City has held a series of meetings to gather public input. One of the outcomes of public input was the expansion of the horse trailer parking from 12 spaces to 32 spaces to accommodate group rides. The trails will consist of existing paths and the power line road with improvements. Some trails will be closed and re-vegetated because off road vehicle use has created areas where erosion occurs.

To alleviate concerns of local residents in Troon North, parking will not be permitted along Alma School Road and violations will be subject to ticketing and fines.

This area is lush and beautiful and includes stands of small juniper trees, the original Brown's Ranch homestead, and archeology sites. The wildlife is abundant and desert tortoises can be seen in the rocky areas near Granite Mountain. We are very fortunate to have this new trail system so close to our homes!

It was an exciting meeting with a promise of great improvements in the trail system.



Update on McDowell Mountain Regional Park Trails Master Plan

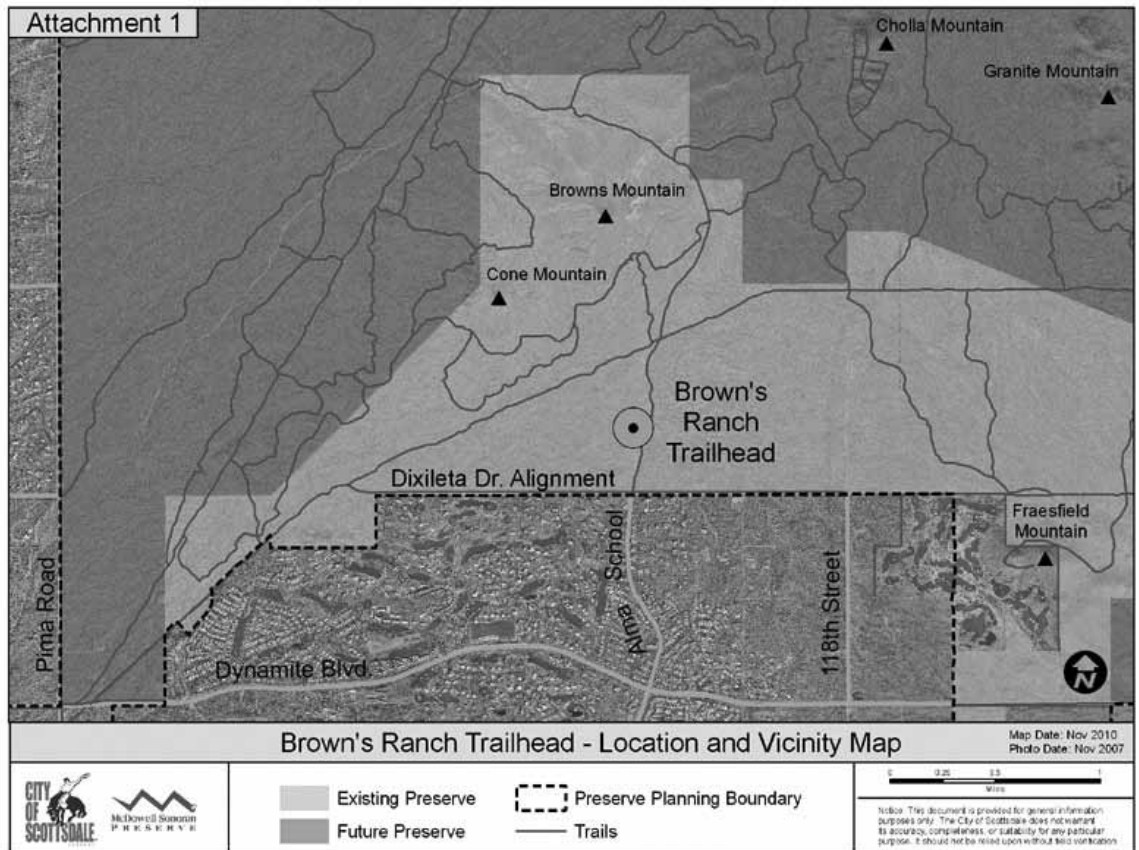
The Maricopa County Parks and Recreation Department held a public meeting to review the McDowell Mountain Regional Park Trails Master Plan to ensure that the Park has an adequate trail system in place to support future use.

The plan, originally developed in 1999 and revised in 2008, now includes the addition of trails to link the Pemberton (perimeter trail) with interior trails to allow shorter loop alternatives; additional access from the south side of the Rio Verde Foothills community; improvements to existing trails that were closed following the Rio Fire, but will now be re-opened; and a new trail to parallel the Shamo Wash Trail, thus bypassing nearly two miles of deep sand leaving and returning to the Four Peaks staging area. The plan incorporates suggestions made in the 2008 meeting and more. The meeting also

presented plans to create a “flume trail” for mountain bike riders. This type of downhill trail, described as “a bob sled run for bikes” is ideally suited for the gradual slope of the Park from west to east and is a popular component of mountain biking parks in the eastern part of the country. Various locations are under consideration, but most of the discussion placed the trail near the existing Competitive Track at the entrance to the Park.

Something to consider regarding the public meeting held June 23 – the meeting was on a weekday in the early evening and the room was hot and crowded with hikers, equestrians, and bikers. Everyone got along peacefully and asked questions of the other groups for clarification. It was an exciting meeting with a promise of great improvements in the trail system. One mountain biker, originally from California, said

that if this meeting had been held in his native state the room would have been divided with bikers on one side and equestrians on the other and security would have been needed to keep the two factions from throwing things at one another. He remarked that the two groups in Arizona get along well and are polite and considerate to one another. It was a nice observation of the ability of interested parties to work together toward a common goal. Other bike riders commented that biking magazines emphasize the importance of courtesy towards horseback riders



and offer tips and information regarding horse encounters on the trail.

Because this is a government project, progress is slow at best. It has been three years since the public input suggested at the last series of meetings was incorporated into the plan. Hopefully it will not be another three years before the plan is implemented. However, officials at the meeting could not provide a timeline other than to say the government moves at a very slow pace and studies are required to assess the impact the trails will have on the ecosystem, archeology sites, etc. Offers of volunteers to help with trail construction were made by horsemen and bicycle enthusiasts. On the bright side, the trail system will eventually be significantly improved and expanded, probably within our lifetime!

RIO VERDE HORSEMEN'S ASSOCIATION

28150 N. Alma School Pkwy. #103/112
Scottsdale, AZ 85262
rvha-az.com

2011 APPLICATION FOR MEMBERSHIP

Name (1) _____ Name (2) _____

Mailing Address _____ City _____ State _____ Zip _____

Street Address _____ City _____ State _____ Zip _____
(If different from mailing address)

Property Address (If different from above) _____

Phone Numbers:

Member (1) Home () _____ Cell () _____

Member (2) Home () _____ Cell () _____

E-Mail Addresses:

(1) _____

(2) _____

Annual Dues: _____ \$ 25.00 Single Membership _____ \$ 35.00 Household Membership

After 7/1 _____ \$ 12.50 Single Membership _____ \$ 17.50 Household Membership

3 years _____ \$ 70.00 Single Membership _____ \$100.00 Household Membership

Lifetime: _____ \$250.00 Single Membership _____ \$350.00 Household Membership

New Member Dues received after 11/1 are accepted for the following year. Annual memberships expire 12/31 each year. Renewals must be received by 1/30 each year to be included in the Membership Directory. Paid dues are not refundable.

Membership Status:

_____ Associate Member – Not a property owner in the RVHA* area

_____ Voting Member – Property owner in the RVHA* area

RVHA Application (Continued)

For verification of voting member status, include parcel number # _____.

(*RVHA area is: Unincorporated county lands bounded by Tonto National Forest on the North, 136th St. on the West, McDowell Mountain Regional Park on the South, and the communities of Rio Verde and the Verde River on the East.)

I/We would like to help with:

_____ Social Events _____ Trail Rides _____ Membership/Directory _____ Mailing Committee
_____ Trails Committee _____ Newsletter _____ Advertising _____ Roadside Cleanup

The RVHA hosts various social functions such as our annual Chili Cook-Off, Trail Rides, Dinner Dance, General Membership Meetings etc. What other activities would you like? Suggestions or Comments.

With your RVHA membership, households receive a Member Directory which is available in 2 formats.

Please check one choice: CD PDF file via email None

* * *

MISSION STATEMENT

The Rio Verde Horsemen's Association is dedicated to protecting all horse properties, large and small facilities alike, and to preserving horse privileges along with our rural lifestyle. The Association is committed to uniting our horse community in working toward these goals. Membership is open to all, horse owners and non-horse owners alike, who support our purpose. We are not a "Homeowner's Association", we do not restrict, regulate or police.

If you can support our mission, we welcome you as a member.

I/We do support this mission:

Date _____ Signature _____

Date _____ Signature _____

CLASSIFIEDS

BUSINESS CONSULTING, ACCOUNTING, MANAGEMENT, BOOKKEEPING AND ADMINISTRATIVE SERVICES, your office or mine.

Need help with any aspect of running your office?

Need to run your office more efficiently?

Need help playing catch up on your accounting or admin?

Need to set up a home office? Many other services available.

One-time, weekly, bi-weekly, monthly and annual visits welcome.

MBA with a proven track record of setting up, assisting and running successful small businesses, is ready to help you.

Call Sandra 602.751.9608

TACK CLEANING SERVICES -- Saddles, bridles, halters, reins, harnesses and more. Call for quote. Pick up and delivery available. 602.225.2454

MEDICARE ELIGIBLE BENEFICIARIES Part

A, Part B, Part C, Part D, Medigap
Concerned or confused about your coverage choices! We help explain your options. No fee or charge. Everett Raines, Raines Insurance Services, Inc. 623-393-8222 everett@rainesinsurance.com

MINI HORSES- Who says money can't buy love? Colorful, affectionate tiny horses. Great with kids. Minis are great fun for the entire family. Loving pets, driving horses, darling foals, and champion breeding horses always available for purchase. Lynn 480-563-3114

HORSE SHOEING - Serving Valley Wide. Rio Verde area references available. Call T.J. Romano at 623-764-8271 or Thor Dusenberry at 480-518-1774

Newsletter Ad Rates & Deadlines

Newsletter Ad Rates

Business Card Ads:

\$70 for four issues

Quarter Page Ads:

\$140 for four issues

Half Page Ads:

\$200 for four issues

Full Page Ads:

\$360 for four issues

(plus \$20 additional for back page)

Full Page Inserts:

\$120 per issue

Classified Ads:

(for members only)

For Sale, Wanted, Services

\$5 per issue or

\$15 for four issues

All ads must be paid in full by each newsletter ad deadline in order to be included in the issue.

The Rio Verde Roundup is published quarterly.

For information on placing an ad contact Nancy Arvizu (480) 686-1970 or email nanciarvizu@gmail.com or mail your ad to RVHA, 28150 N. Alma School Pkwy., #103/112, Scottsdale, AZ 85262.
www.rvha-az.com

**Deadline for
New items or ads for the
December 2011 issue
November 10, 2011**



We would like to thank the advertisers for their support

Publication of these ads does not represent or constitute endorsement by the RVHA.

NOTICE TO ADVERTISERS

IF PAYMENT OF YOUR ADVERTISEMENT IS NOT PAID IN FULL BY THE NEWSLETTER ISSUE DEADLINE, YOUR AD WILL NOT BE RUN. YOU WILL BE NOTIFIED IN ADVANCE BY A MEMBER OF THE ADVERTISING COMMITTEE IF PAYMENT IS DUE. THANK YOU FOR YOUR COOPERATION.